

E- serie

Reservdelar och Monteringsdetaljer

2009 11 18



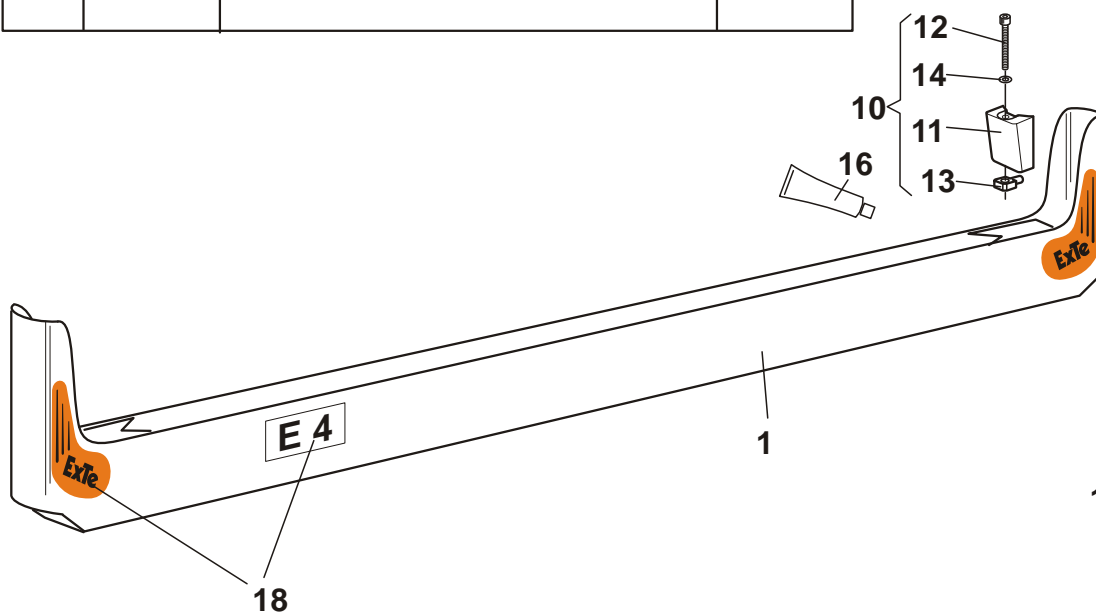
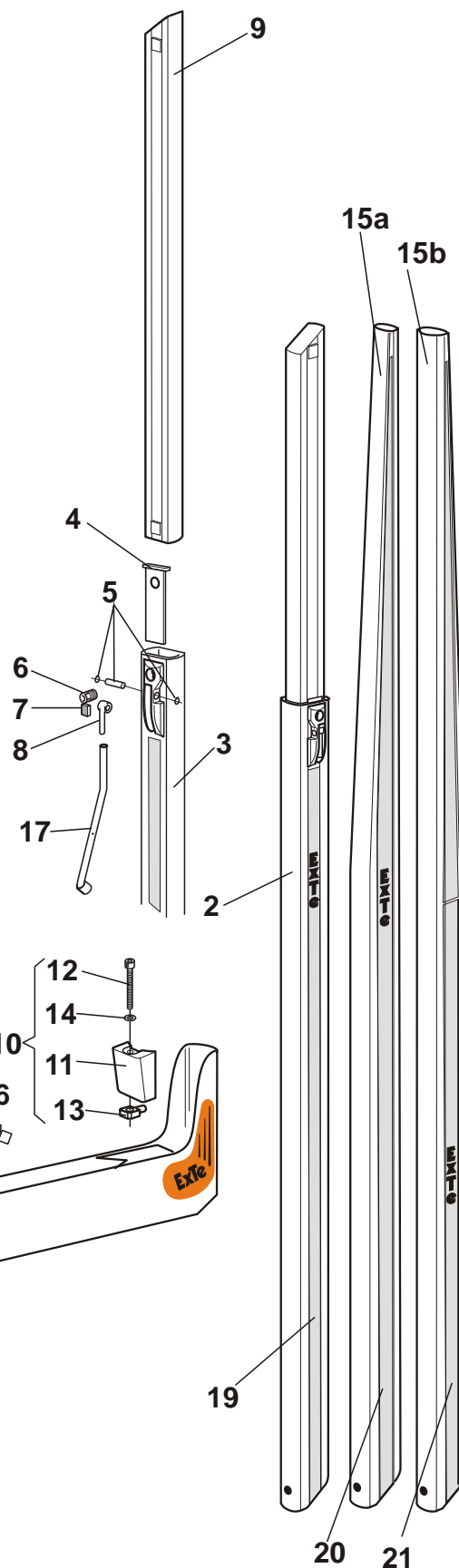
ExTe

Securing cargo. We invented the concept.

Reservdelar

E-4

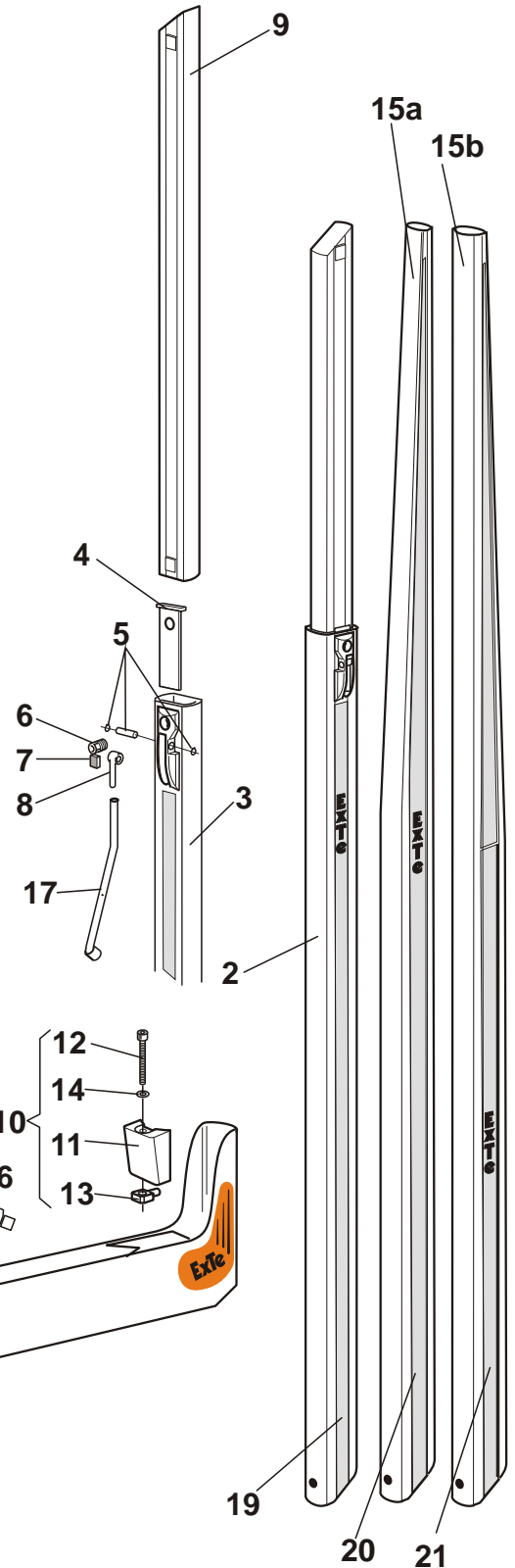
Pos	Art.nr	Benämning	Vikt.
1	810701	Stomme 2.55	60.0 kg
--	810735	Stomme 2.60	61.0 kg
2	810728	Teleskopstake LH 2.8	26.0 kg
3	810187	Underprofil L= 1900 mm	17.5 kg
4	814486	* Tryckplatta	
5	814487	* Axel, incl. låsringar	
6	800825	* Teleskopskruv	
7	810158	* Skruvstopp	
8	814491	* Excenter	
9	810175	Överstake L= 1350 mm	8.5 kg
10	810760	Låselement kompl.	1.3 kg
11	810764	* Kil	
12	810191	* Skruv MC 16x160 (helgängad)	
13	810197	* Stopptapp	
14	211910	* Bricka	
15a	810724	Euro S stake LH 2.6	20.5 kg
15a	810727	Euro S stake LH 2.8	21.7 kg
15b	801695	C-stake LH 2.6	
15b	801697	C-stake LH 2.8	
16	802108	Fett, Uniway Lix 625 (tub)	
17	814492	Teleskopnyckel	
18	810781	Dekalsats, bankestomme (E-4)	
19	810157	Dekalsats, teleskopstake	
20	810788	Dekalsats, Euro S stake	
21	810789	Dekalsats, C-stake	



Reservdelar

E-6

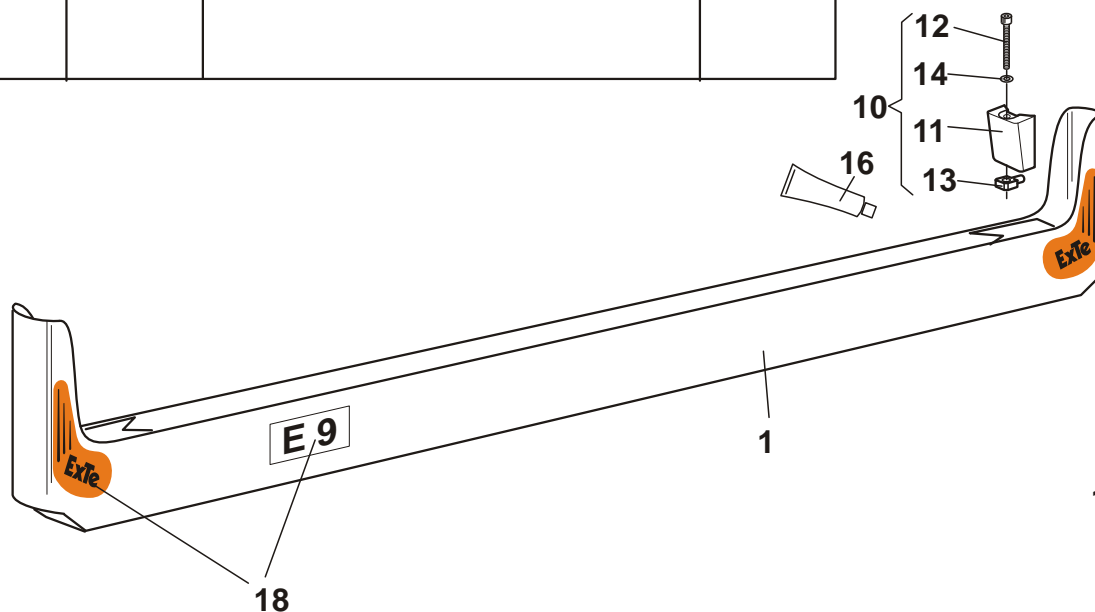
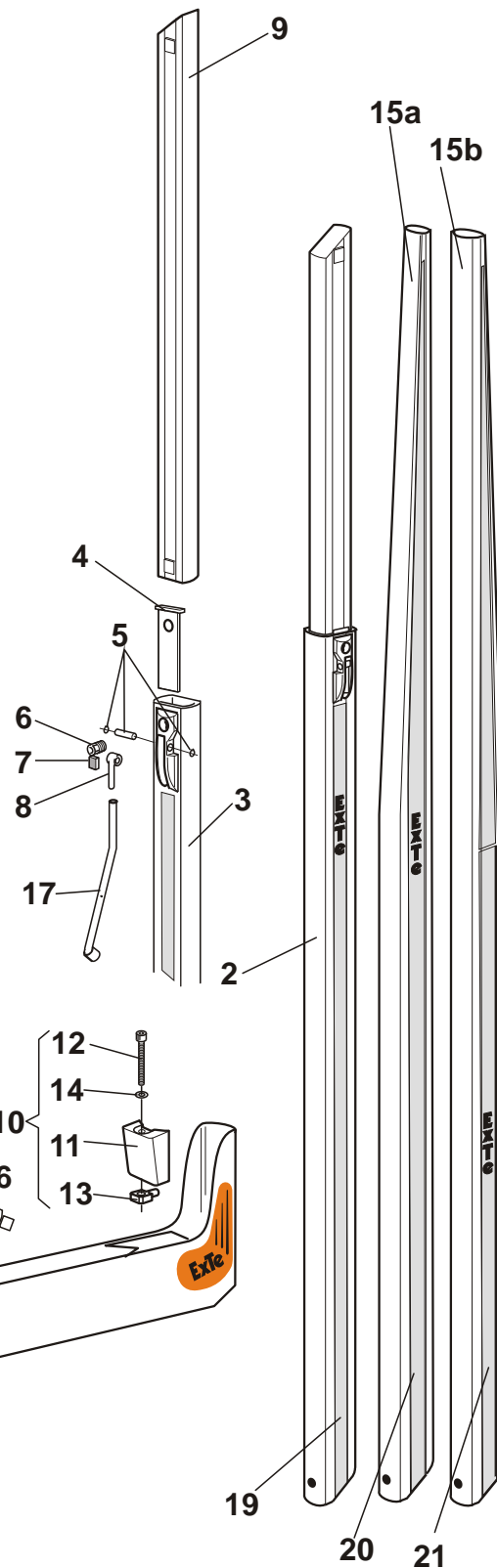
Pos	Art.nr	Beskrivning	Vikt
1	810702	Stomme 2.55	66.0 kg
--	810736	Stomme 2.60	67.0 kg
2	810180	Teleskopstake LH 3.0	29.7 kg
3	810179	Underprofil L= 2100 mm	21.2 kg
4	814486	* Tryckplatta	
5	814487	* Axel, inkl. låsringar	
6	800825	* Teleskopskruv	
7	810158	* Skruvstopp	
8	814491	* Excenter	
9	810175	Överstake L= 1350 mm	8.5 kg
10	810760	Låselement kmpl.	1.1 kg
11	810764	* Kil	
12	810191	* Skruv MC 16x160 (helgängad)	
13	810197	* Stopptapp	
14	211910	* Bricka	
15a	801783	Euro S stake LH 2.8	26.3 kg
15a	801785	Euro S stake LH 2.9	27.3 kg
15a	801784	Euro S stake LH 3.0	28.3 kg
15b	801703	C-stake LH 2.6	
15b	801704	C-stake LH 2.7	
15b	801705	C-stake LH 2.8	
15b	801706	C-stake LH 2.9	
15b	801707	C-stake LH 3.0	
16	802108	Fett, Uniway Lix 625 (tub)	
17	814492	Teleskopnyckel	
18	810782	Dekalsats, bankestomme (E-6)	
19	810157	Dekalsats, teleskopstake	
20	810788	Dekalsats, Euro S stake	
21	810789	Dekalsats, C-stake	



Reservdelar

E-9

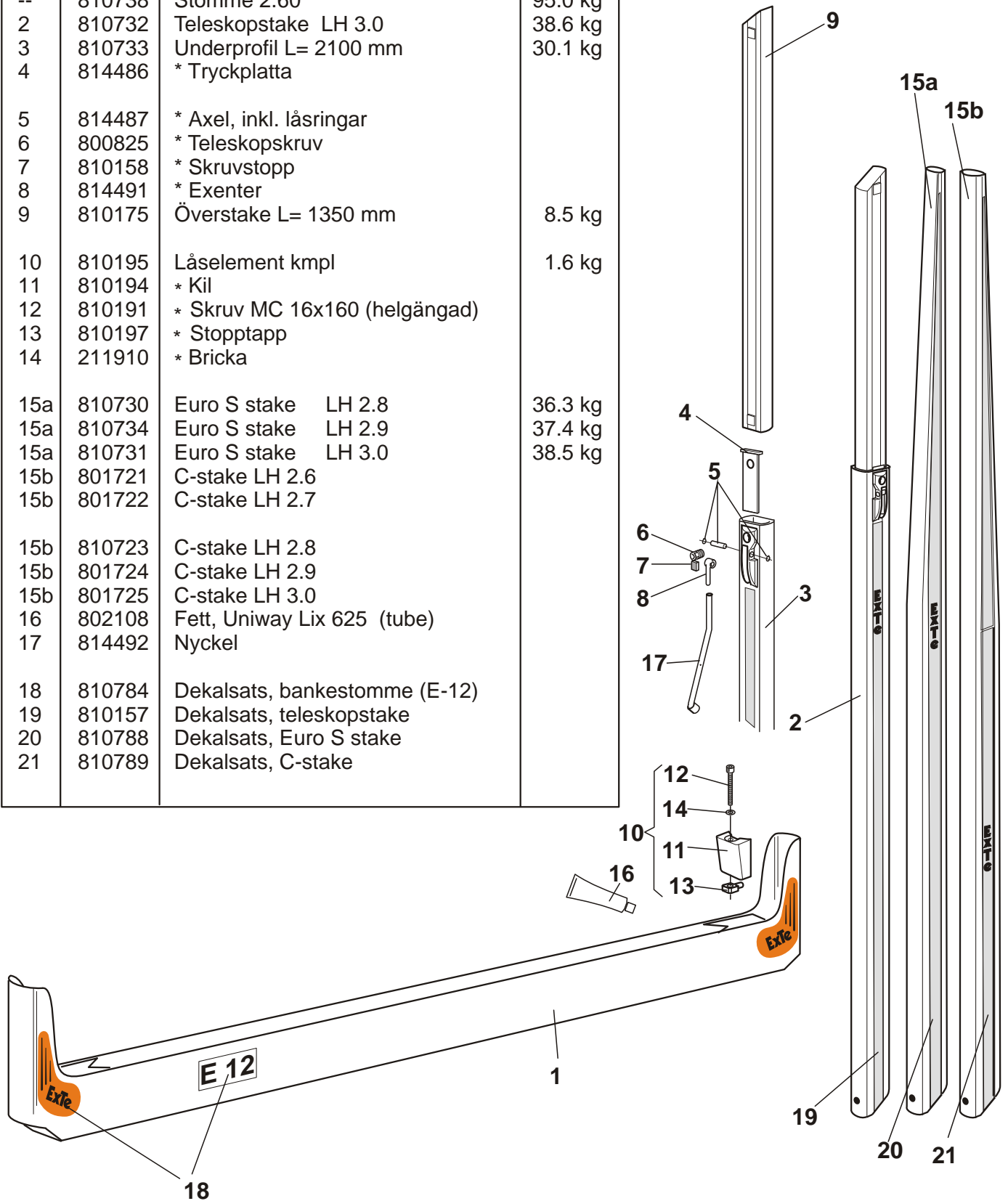
Pos	Art.nr	Beskrivning	Vikt
1	810703	Stomme 2.55	86.0 kg
--	810737	Stomme 2.60	87.0 kg
2	810190	Teleskopstake LH 3.0	34.2 kg
3	810189	Underprofil L= 2100 mm	25.6 kg
4	814486	* Tryckplatta	
5	814487	* Axel, inkl. låsringar	
6	800825	* Teleskopskruv	
7	810158	* Skruvstopp	
8	814491	* Excenter	
9	810175	Överstake L= 1350 mm	8.5 kg
10	810760	Låselement kompl.	1.1 kg
11	810764	* Kil	
12	810191	* Skruv MC 16x160 (helgångad)	
13	810197	* Stopptapp	
14	211910	* Bricka	
15a	801728	Euro S stake LH 2.8	30.7 kg
15a	801729	Euro S stake LH 2.9	31.7 kg
15a	801730	Euro S stake LH 3.0	32.7 kg
15b	801738	C-stake LH 2.8	
15b	801739	C-stake LH 2.9	
15b	801740	C-stake LH 3.0	
16	802108	Fett, Uniway Lix 625 (tub)	
17	814492	Teleskopnyckel	
18	810783	Dekalsats, bankestomme (E-9)	
19	810157	Dekalsats, teleskopstake	
20	810788	Dekalsats, Euro S stake	
21	810789	Dekalsats, C-stake	



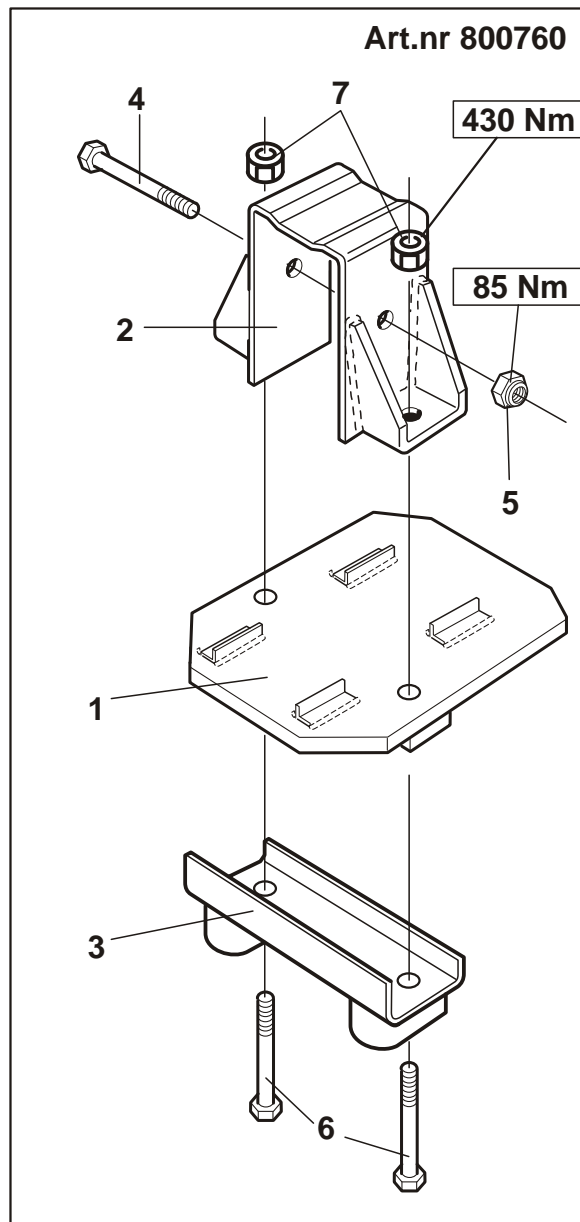
Reservdelar

E-12

Pos	Art.nr	Beskrivning	Vikt
1	810704	Stomme 2.55	93.8 kg
--	810738	Stomme 2.60	95.0 kg
2	810732	Teleskopstake LH 3.0	38.6 kg
3	810733	Underprofil L= 2100 mm	30.1 kg
4	814486	* Tryckplatta	
5	814487	* Axel, inkl. låsringar	
6	800825	* Teleskopskruv	
7	810158	* Skruvstopp	
8	814491	* Exenter	
9	810175	Överstake L= 1350 mm	8.5 kg
10	810195	Låselement kmpl	1.6 kg
11	810194	* Kil	
12	810191	* Skruv MC 16x160 (helgängad)	
13	810197	* Stopptapp	
14	211910	* Bricka	
15a	810730	Euro S stake LH 2.8	36.3 kg
15a	810734	Euro S stake LH 2.9	37.4 kg
15a	810731	Euro S stake LH 3.0	38.5 kg
15b	801721	C-stake LH 2.6	
15b	801722	C-stake LH 2.7	
15b	810723	C-stake LH 2.8	
15b	801724	C-stake LH 2.9	
15b	801725	C-stake LH 3.0	
16	802108	Fett, Uniway Lix 625 (tube)	
17	814492	Nyckel	
18	810784	Dekalsats, bankestomme (E-12)	
19	810157	Dekalsats, teleskopstake	
20	810788	Dekalsats, Euro S stake	
21	810789	Dekalsats, C-stake	

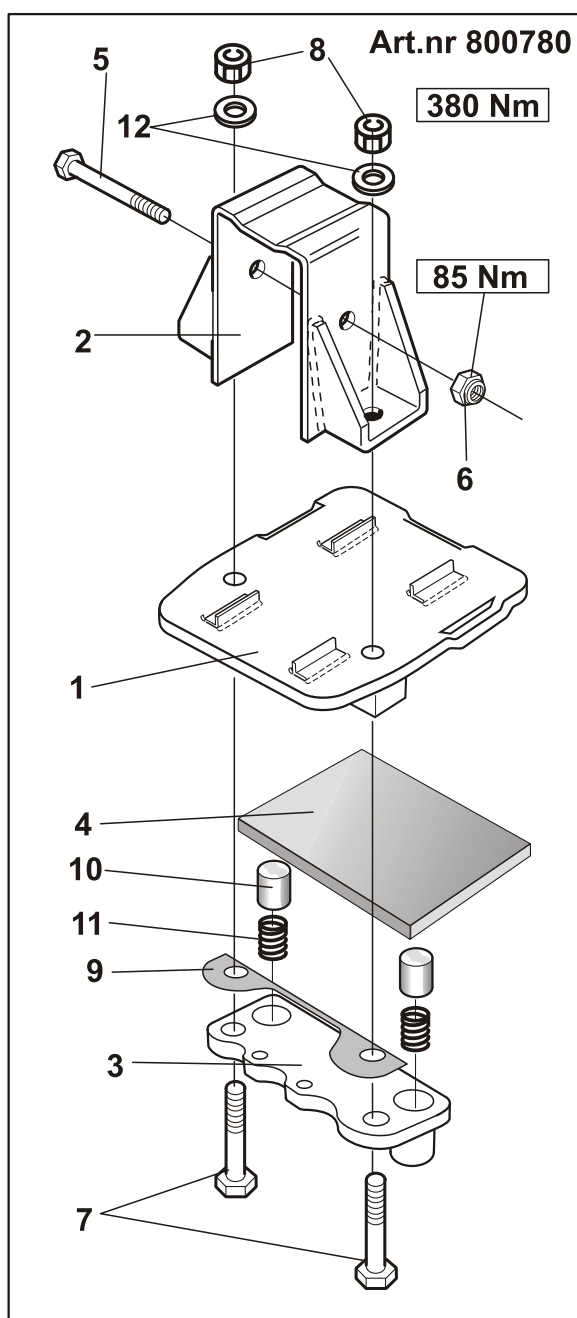


Klämfäste



pos	Nr/No	Beskrivning	Description	Bezeichnung	anm.note
1.	800 761	Monteringsplatta	Mounting plate	Grundplatte	8.1 kg
2.	800 765	Överbygel	Upper part	Bügel oben	3.6 kg
3.	800 672	Fästbygel	Fastening plate	Klemmbügel	3.0 kg
4.	211098	Skruv	Screw	Schraube	M12x140
5.	211857	Mutter	Nut	Mutter	M12 lock
6.	211169	Skruv	Screw	Schraube	M20x130
7.	211861	Mutter	Nut	Mutter	M20 lock

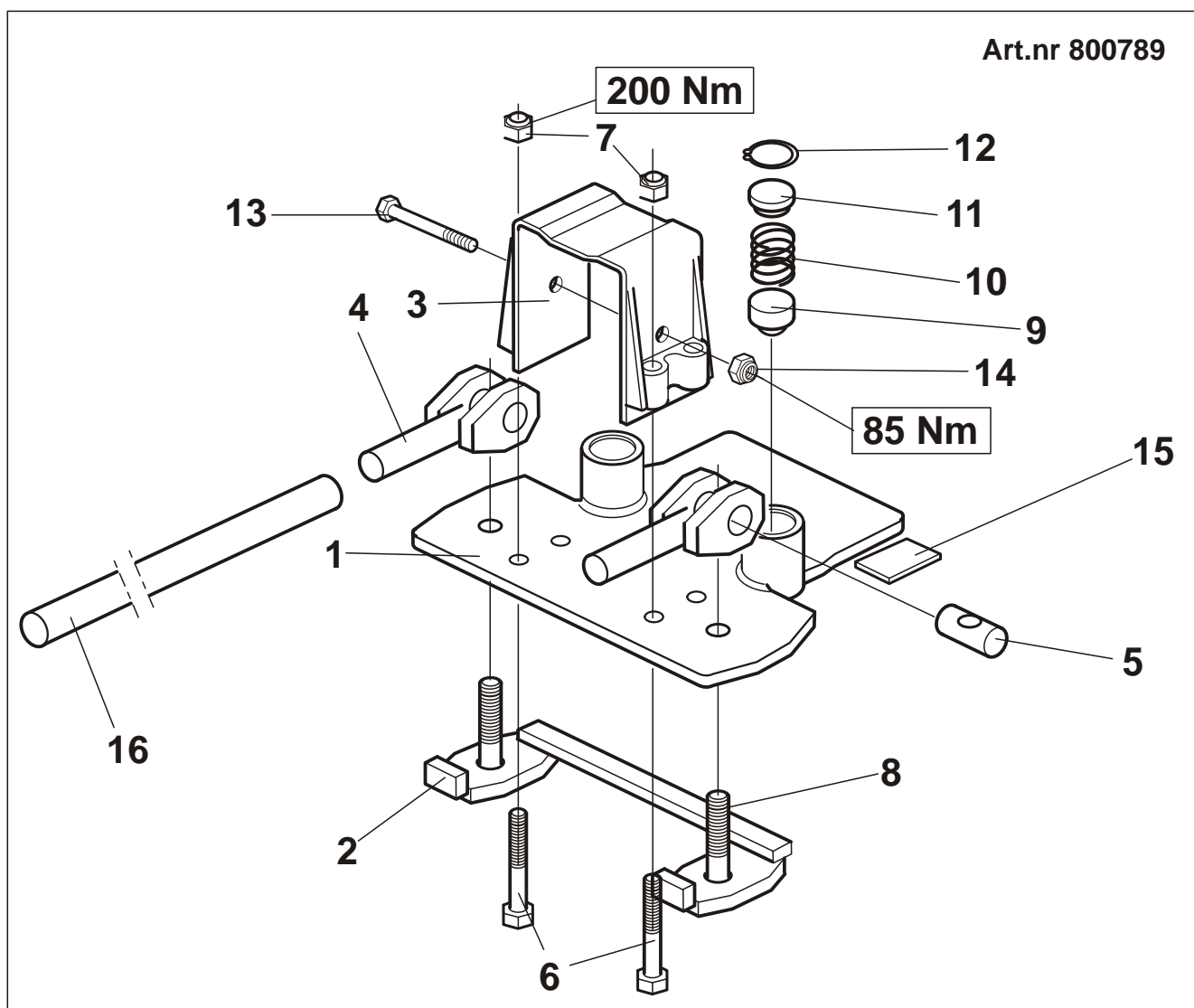
Friktionsfäste



pos	Nr/No	Beskrivning	Description	Bezeichnung	anm.note
1.	800 771	Monteringsplatta	Mounting plate	Grundplatte	8.7 kg
2.	800 765	Överbygel	Upper part	Bügel oben	3.8 kg
3.	800 602	Underplatta	Fastening plate	Führungsplatte unten	3.5 kg
4.	800 647	Glidplatta 15 mm	Sliding pad 15 mm	Gleitplatte 15 mm	
--	800 646	Glidplatta 20 mm	Sliding pad 20 mm	Gleitplatte 20 mm	
5.	211 098	Skruv	Screw	Schraube	M12x140
6.	211 857	Mutter	Nut	Mutter	M12 lock
7.	211 171	Skruv	Screw	Schraube	M20x140
8.	211 861	Mutter	Nut	Mutter	M20 lock
9.	211 902	Bricka	Washer	Scheibe	
10.	800 603	Plastplunch	Plastplunge	Ausgleichspilz	
11.	800 604	Fjäder	Spring	Spiralfeder	
12.	800 616	Shims	Shim	Shims	

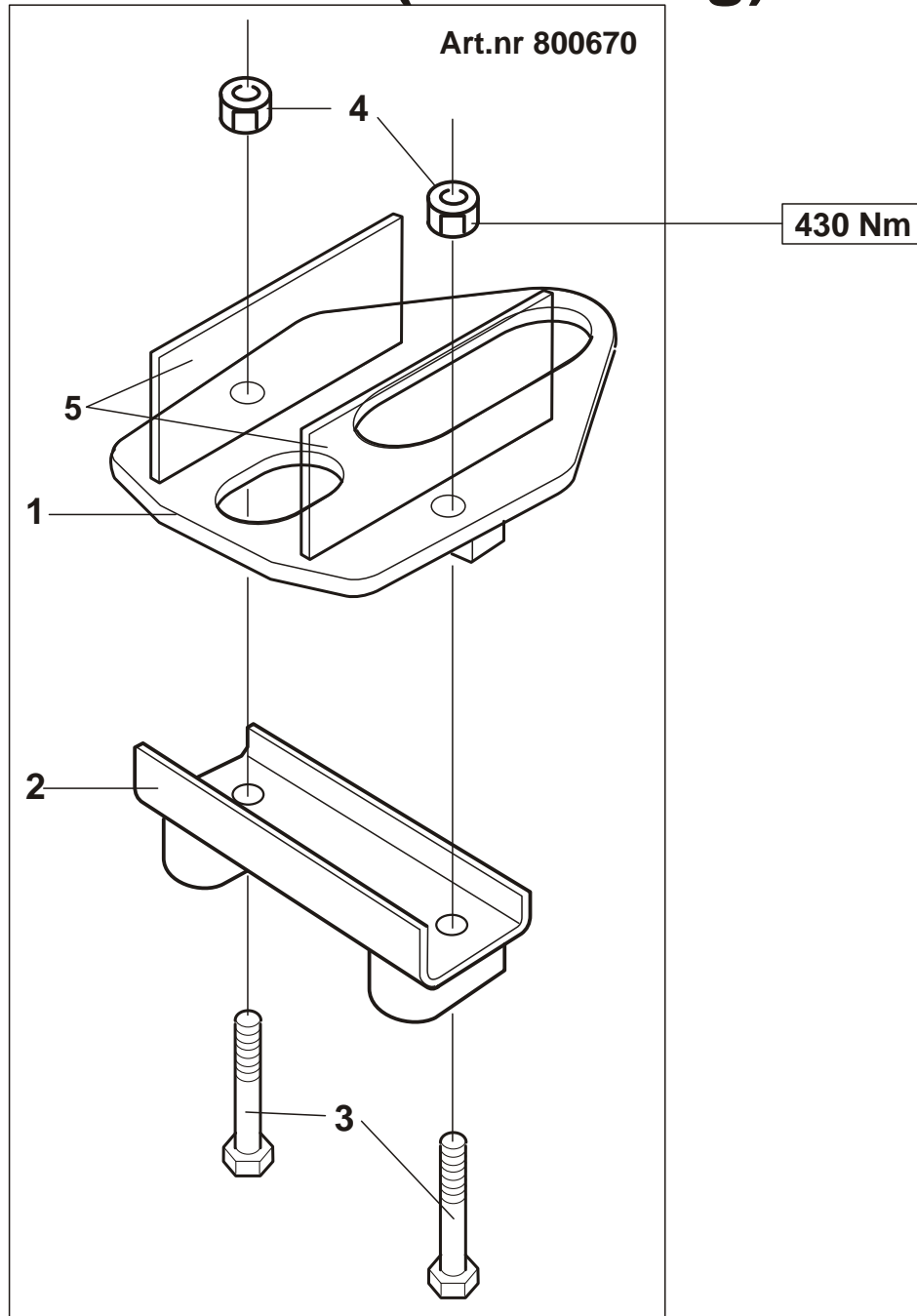
Rullfäste

Art.nr 800789



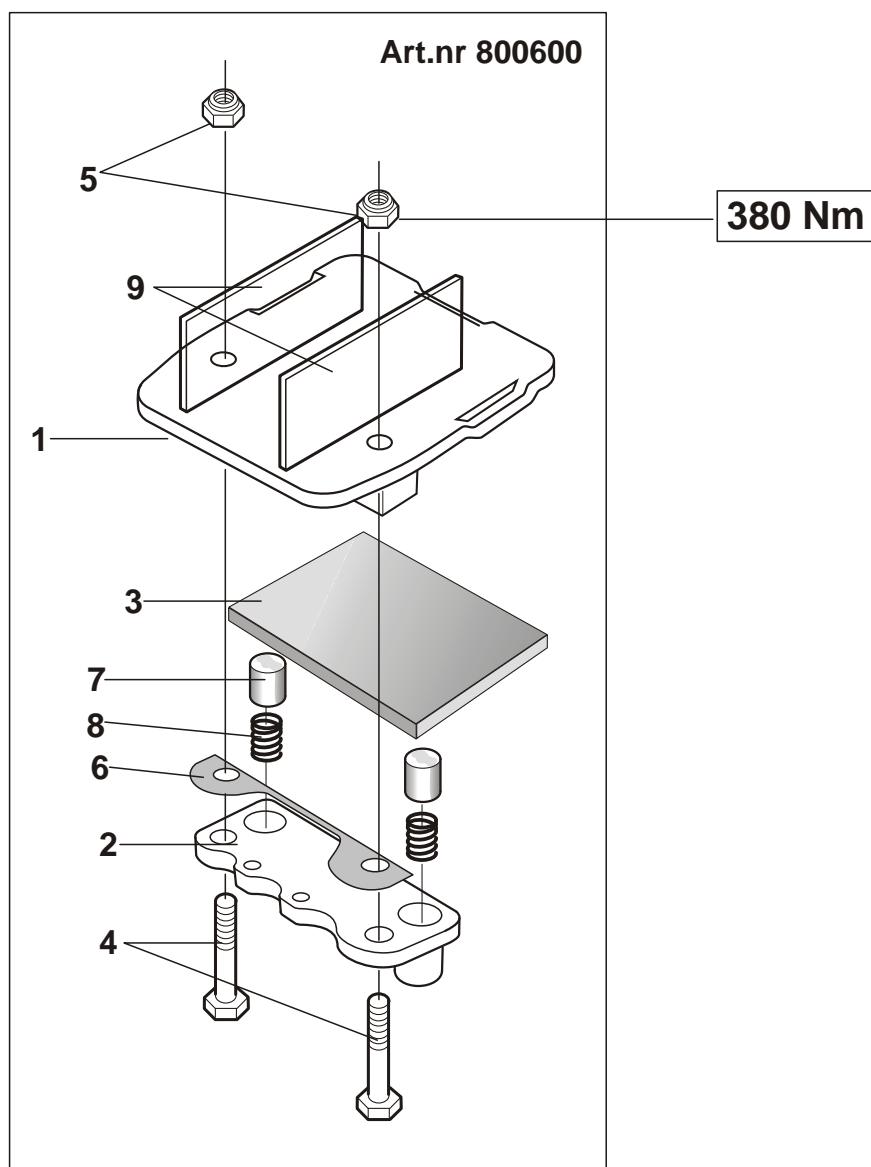
pos	Nr/No	Beskrivning	Description	Bezeichnung	anm.note
1.	800 791	Monteringsplatta	Mounting plate	Grundplatte	7.9 kg
2.	800 613	Underbygel	Fastening plate	Befestigungsbügel	2.5 kg
3.	800 793	Överbygel	Upper part	Bügel oben	3.2 kg
4.	800 713	Spänngaffel	Excentric Fork	Spanngabel	0.8 kg
5.	800 709	Axel	Axle	Achse	0.2 kg
6.	211 120	Skruv	Screw	Schraube	M16x110
7.	211 860	Mutter	Nut	Mutter	M16 lock
8.	211 167	Skruv	Screw	Schraube	M20x1.5x80
9.	800 607	Kulrulle	Roller bearing	Kugelrolle	
10.	800 608	Fjäder	Spring	Feder	
11.	800 609	Lock	Cover	Deckel	
12.	800 610	Låsring	Lock ring	Sicherungsring	
13.	211 098	Skruv	Screw	Schraube	M12x140
14.	211 857	Mutter	Nut	Mutter	M12 lock
15.	800 718	Stoppklack	Stop	Anschlag	40x40x3
16.	800 716	Manövernyckel	Operating handle	Rohr	L= 600

Klämfäste (svetsning)



pos	Nr/No	Beskrivning	Description	Bezeichnung	anm.note
1.	800 671	Monteringsplatta	Mounting plate	Grundplatte	5.0 kg
2.	800 672	Underbygel	Fastening plate	Befestigungsbügel	3.1 kg
3.	211 165	Skruv	Screw	Schraube	M20x75
4.	211 861	Mutter	Nut	Mutter	M20 Lock
5.	810 036	Fästplåt	Fastening plate	Seitenbleche	200x90x7mm

Friktionsfäste (svetsning)



pos	Nr/No	Beskrivning	Description	Bezeichnung	anm.note
1.	800 701	Monteringsplatta	Mounting plate	Grundplatte	7.0 kg
2.	800 602	Underplatta	Fastening plate	Führungsplatte unten	3.5 kg
3.	800 647	Glidplatta 15 mm	Sliding pad 15 mm	Gleitplatte 15 mm	0.5 kg
--	800 646	Glidplatta 20 mm	Sliding pad 20 mm	Gleitplatte 20 mm	0.5 kg
4.	211 166	Skruv	Screw	Schraube	M20x90
5.	211 861	Mutter	Nut	Mutter	M20 lock
6.	800 644	Bricka	Washer	Scheibe	
7.	800 603	Plastplunch	Plastplunge	Ausgleichspilz	
8.	800 604	Fjäder	Spring	Spiralfeder	
9.	810 036	Fästplåt	Fastening plate	Seitenbleche	200x90x7mm
10	800 616	Shims	Shim	Shims	

ExTe

ExTe Fabriks AB, SE-820 41 Färila Sweden. Tel: +46(0)651 175 00. Fax: +46(0)651 175 03
E-mail: info@exte.se www.exte.se