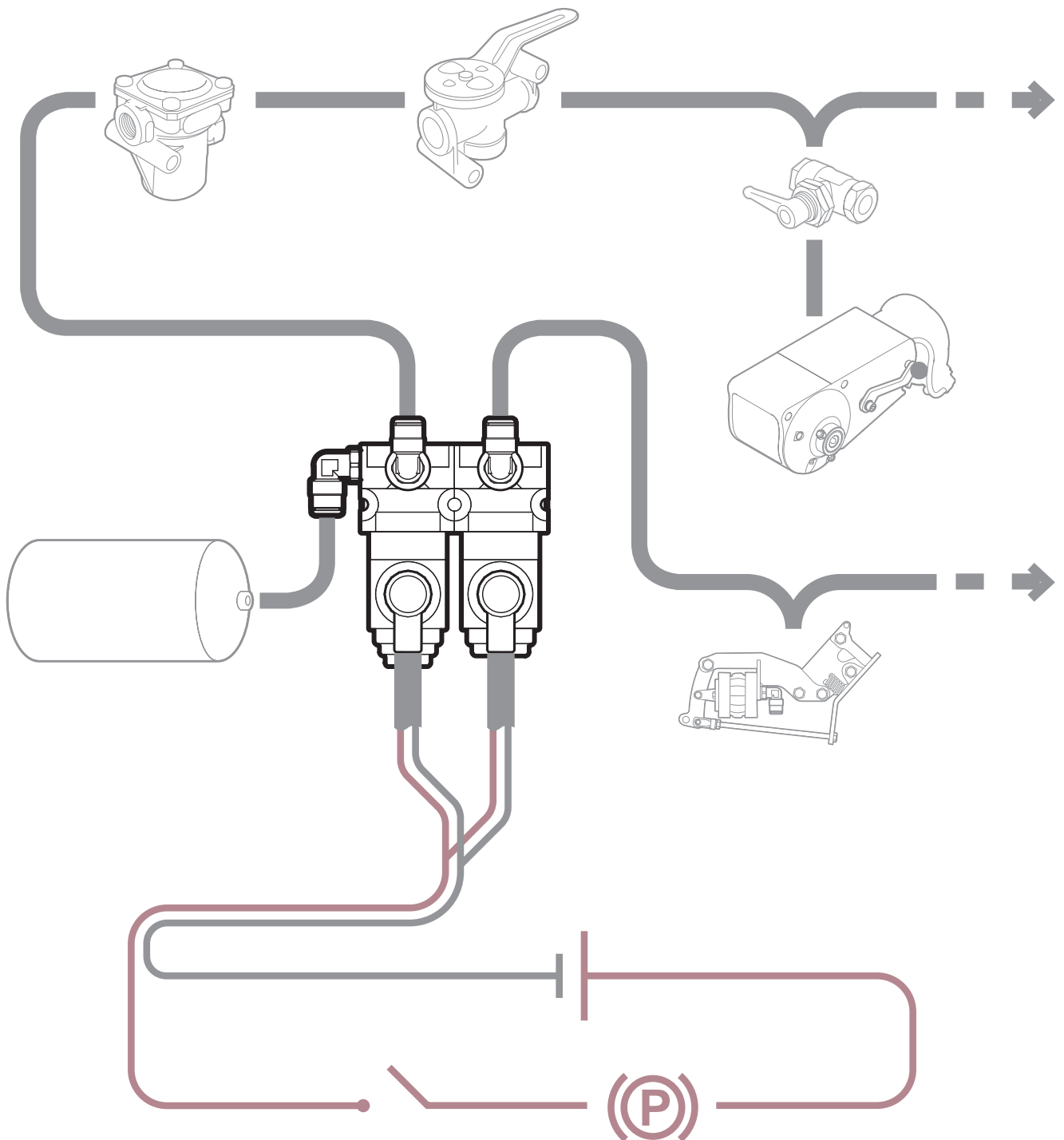


Remote Release

Installation manual

AD00362 en REV_A © Copyright ExTe Fabriks AB, 2025

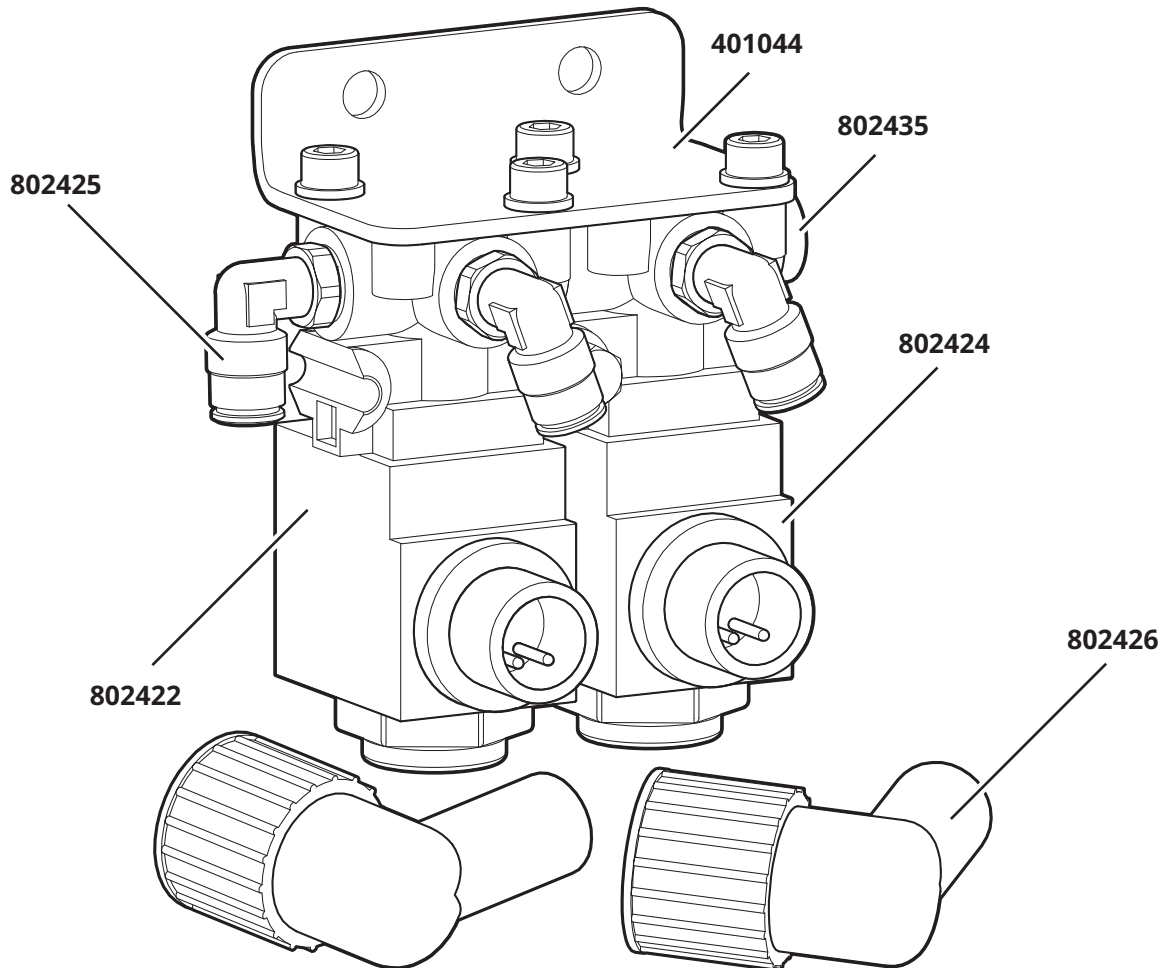


ExTe

Securing cargo. We invented the Concept.

ExTe Fabriks AB, BOX 18, SE-827 62 Färila, Sweden. Tel: +46 (0)651-175 00. E-mail: info@exte.se www.exte.se

802480 | Release valve assembly - TU



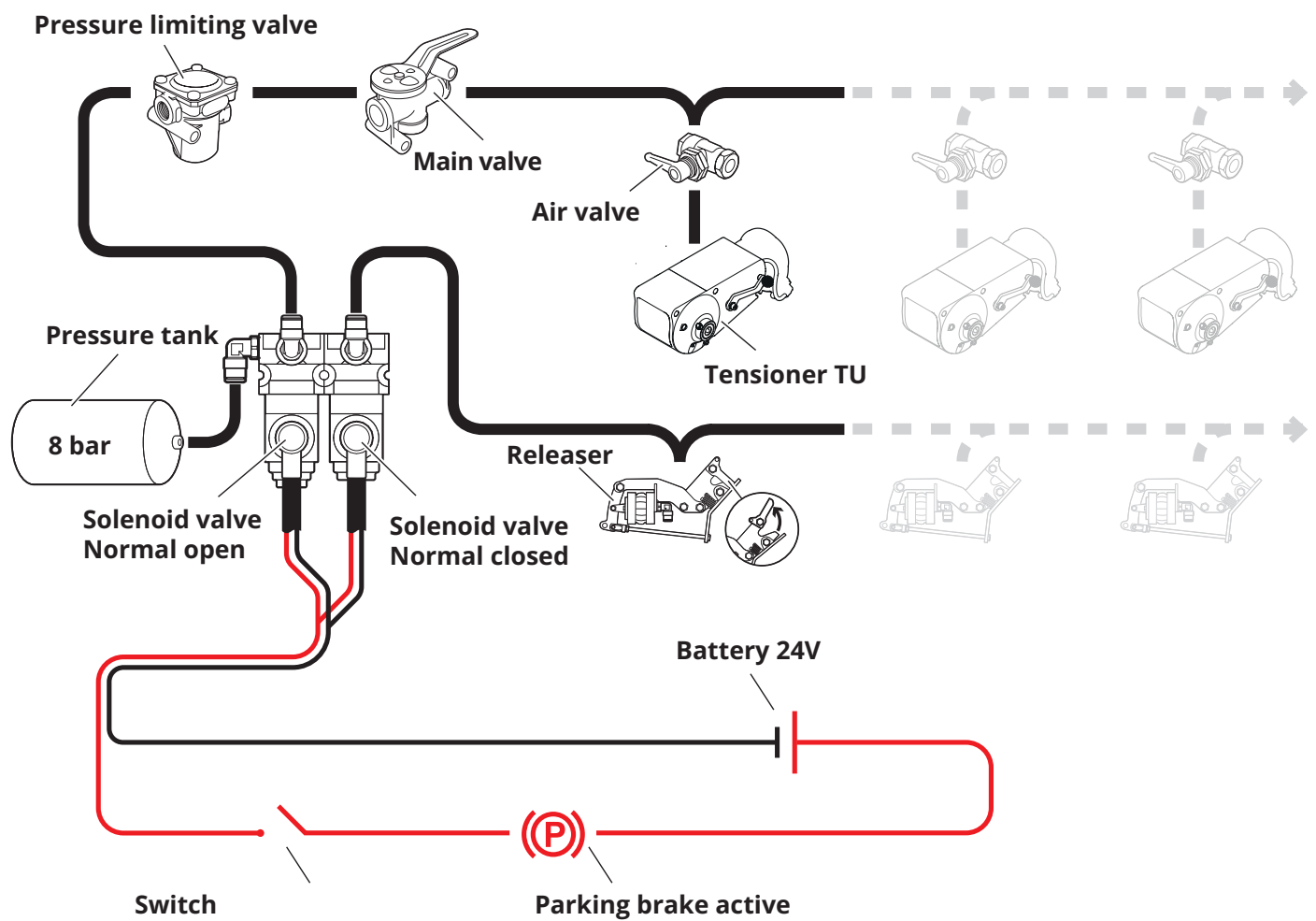
Remote Release

Requirements for bodybuilders regarding the programming of the button that controls the release of load securing: The button/switch must be integrated with the truck's BBI system (Body Builder Interface) in such a way that the following requirements are fulfilled:

- The button, whether digital or physical, must not be possible to activate by mistake. For example, it should require a 3-second long press to activate. The button, if physical, must also be of "spring-return" type, meaning it returns to its original position once released.
- After the function has been activated, it must automatically return to its original state after 10 seconds.
- The parking brake must be engaged for the function to operate.

Both valves (NC and NO) are activated simultaneously and each draws 10 W (410 mA @ 24V). Therefore, the output must support at least 1 A current – otherwise, a relay must be installed.

This is a simplified installation intended to illustrate the principle.





ExTe Fabriks AB
Gundbergsvägen 6
SE-827 62 Färila, Sweden
Tel: +46(0)651 175 00
sales@exte.se
support@exte.se

www.exte.se